

# Building an inclusive economy in Sheffield: the challenge of turning vision into reality

*Tuesday 19<sup>th</sup> November*

Dr Chris Gibbons  
Dr Laura White  
*Sheffield City Council*

# Sheffield Headlines

- Strong sense of community and vibrant community sector – 3,300 voluntary and community groups
- Safe & welcoming city – first city of sanctuary; crime has risen in recent years, but more slowly than other cities and violent crime rates remain significantly below other core cities
- Substantial and accessible green assets across the city - increasing numbers of people are using the natural environment for walking, running and cycling
- Inequalities in health & wellbeing - life expectancy gap between the richest and poorest areas of the city is 10.1 years for men and 7.6 years for women
- Resilience and growth - traditional measures of economic growth suggest Sheffield is close to the Yorkshire average but lagging behind some other core cities
- Economic inclusion? Alternative economic measures reveal a more nuanced picture (See Vibrant Economy and Happy City slides)

## Our Vision

Our vision is for a thriving, successful and vibrant Sheffield economy which delivers better opportunities for more people.

We want all Sheffielders to have the best possible chance to live well, achieve their potential and get the most out of this great city.

In practice, this means that we need to work towards greater and more equal access to the things which help us succeed **as a city and as individuals.**

So, based on our understandings of the inequalities we face, the Sheffield City Partnership is focussed on:

More people living well with:

- a secure income, food and necessities
- a warm and safe home
- a good local environment
- safe and secure communities
- good health and an active life

More people achieving their potential with:

- education and skills which give you a route to grow and achieve your ambitions
- good, rewarding jobs and chances to progress at work



More people getting the most out of our city with:

- support in your community if and when you need it
- places, activities and things to enjoy around the city
- easy and affordable ways to get around
- opportunities to be heard and listened to

## Our Commitment

Working together to build a Sheffield that works for everyone.  
To deliver this, we will focus on:

- **Working better together to drive change**
- **Leading by example**
- **Involving and including people in the city**

## Our Actions

Of course, we want this Framework to be about actions and outcomes, as well as longer-term change, so as a starting point we have identified the following seven action areas:

1

Develop a city-wide approach to joining up education, skills and work, from early years to in-work progression - starting with a focus on digital and new technologies, and health and social care.

2

Agree city-wide commitments to drive-up employment standards, focusing in particular on supporting workers in insecure, low-paid or unstable employment.

3

Work together as a city to address the unequal impact of our key environmental challenges, starting with a focus on clean air and clean lower cost energy.

4

Establish a set of shared principles to guide how we spend, buy and invest as organisations - starting with a partnership framework for progressive procurement.

5

Focus on people's real experience of Sheffield's economy by talking to more people about what an inclusive economy would look like for them, and by taking a new approach to the State of Sheffield 2019.

6

Work across partnerships to respond to our key community safety challenges, focusing in particular on supporting vulnerable people on the street and tackling violent crime.

7

Develop a set of 'inclusive Sheffield' indicators to track our progress in achieving the outcomes we want to see for the people of Sheffield.

Starting at the launch event, we will build a shared plan with stakeholders and communities to deliver these seven actions and identify priorities.

# Context for Progressive Procurement

- [Sheffield City Partnership](#) and [Sheffield City Region Vision Prospectus](#) set out a vision for a more inclusive economy
- SCP **Framework for an Inclusive Economy**
- **Progressive procurement** key part of this framework with anchor institutions having a vital role to play
- **Anchor institutions** have significant economic weight (economic engines) through their contracting activities and we want to ensure that we are maximising this for the overall benefit of the city and its people
- We want to collaborate and sharing learning E.g. from SCC Ethical Procurement Policy

# The Progressive Procurement Group

- In 2018, a progressive procurement 'working' group made-up of Heads of Procurement was established to:
  - Develop a shared framework
  - Engage with local businesses
  - Foster Collaboration
- It has been meeting for over 12 months and we have extended our membership, so as well as SCC, STH, Sheffield College, both universities, voluntary sector, it also now includes the CCG.

# Aims of the Group

The group is now focusing on a small number of key outcomes :

1. Making progress towards the foundation living wage across Sheffield (building on experience of SCC accreditation)
2. Supporting apprenticeships (working through supply chains)
3. Contributing to clean air goals (guided by work of Green City Partnership)
4. Doing business with ethical suppliers



# The Engagement Project

**What do people want and need from  
our city and its economy?**



We're focused on:

- ❖ Reaching and engaging with more people, especially those we need to hear more
- ❖ Trying to talk to people in new and better ways
- ❖ Capturing people's stories of life in Sheffield
- ❖ Bringing these experiences and stories to a wider audience



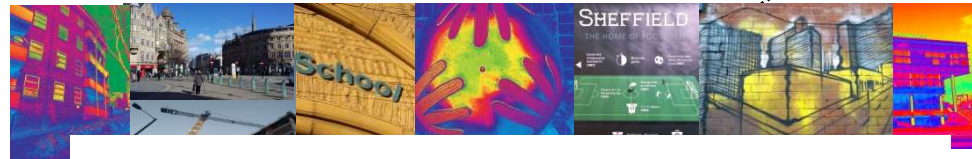
- Education and skills which give you a route to grow and achieve your ambitions?
- Good rewarding jobs?
- Chances to progress at work?
- Safe and secure communities?
- A warm and safe home?
- Opportunities to be heard and listened to?
- Is there anything else that matters to you?

## About me

Mum of three  
S3  
Work part-time  
Family nearby  
Came to Sheffield  
for work 10 years  
ago



E.g. Who are you? who do you look after? what you do? how long have you lived here?



# Sheffield and You

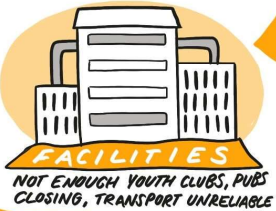


## Possible themes

- Family & Friends
- Hopes & ambitions
- Good stuff to build on
- Fears & barriers
- Feeling well or unwell
- Your community
- How Sheffield is changing

What works well and what doesn't work?

## BAD ☹️



## GOOD 😊



## IDEAS



# THE STATE OF SHEFFIELD

**Sheffield**  
CITY PARTNERSHIP

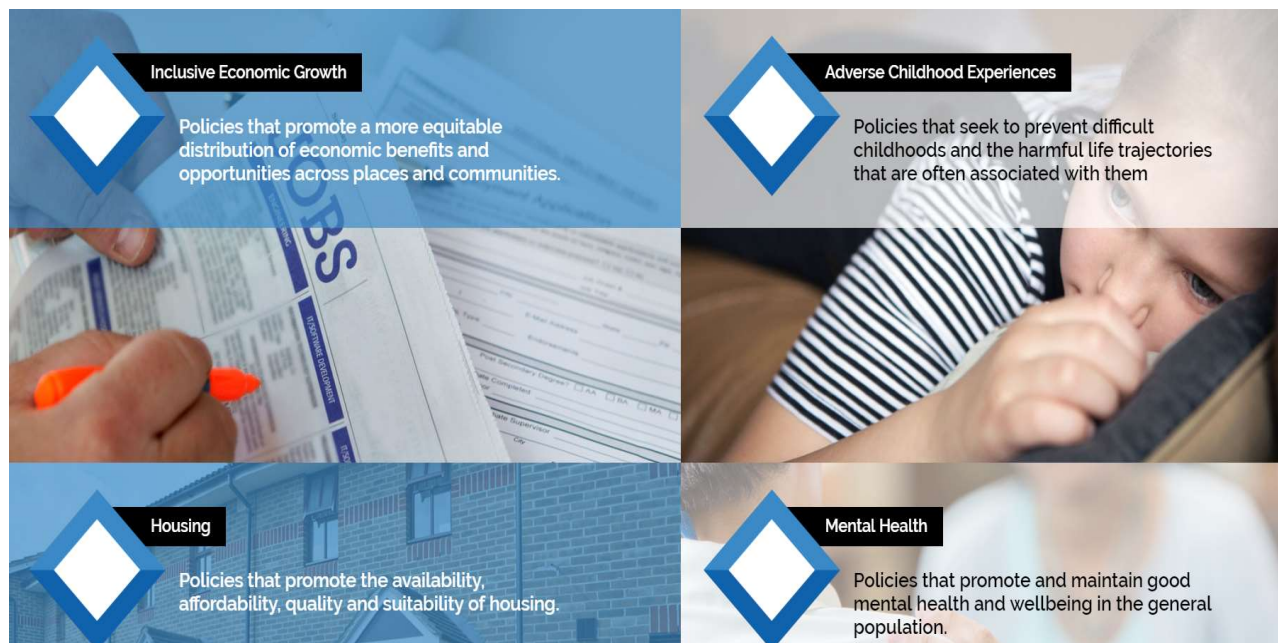
# Local Opportunities

- SCP and State of Sheffield 2018/19 set out aim to develop a local Inclusive Growth/Economy indicator set
- Ongoing review of available indices
- SIPHER consortium project is now live



Systems science  
In Public Health and  
Health Economics Research





- £4.9 million over five years with an additional investment of £1.2 million by project partners.
- Partners from Sheffield, Leeds, Edinburgh, Strathclyde, Newcastle and Manchester universities & local government
- “SIPHER’s vision is a shift from public health policy to healthy public policy”
- Economic decision models & tools that can support policy design, and evaluation.
  - synergies and trade-offs that different policies create across health and non-health outcomes
  - system-wide effects of implemented policies to be understood and monitored over time.

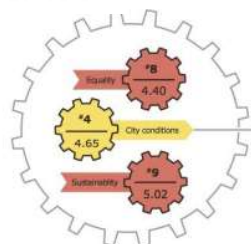
# Local Opportunities

## Comparing prosperity & economic inclusion

The **South East** continues to benefit from the concentration of economic activity within the capital city and surrounding region



City Scorecards: Sheffield



domain	score	rank	sub-domain	score	rank
Work	4.6	3	Quality of work	6.3	4
			Income	3.9	2
			Unemployment	3.6	6
Health	4.3	4	Mortality and life expectancy	4.6	3
			Illness and disability	4.5	4
			Healthy and risky behaviours	3.3	7
			Mental health	5.0	2
Education	4.6	4	Children's education	4.4	5
			Adult qualifications	4.7	4
Place	4.9	4	Safety	4.6	2
			Housing	5.1	1
			Transport	4.9	7
			Green space	4.9	5
Community	4.8	2	Culture	3.7	7
			Participation	6.4	1
			Social isolation	5.0	4
			Local business	4.0	2

<b>INCLUSIVE ECONOMY</b> <i>Expand opportunities for more broadly shared prosperity, especially for those facing the greatest barriers to advancing their well-being.</i>	<b>EQUITABLE</b>	A. Upward mobility for all. B. Reduction of inequality. C. Equal access to public goods and ecosystem services.
	<b>PARTICIPATORY</b>	D. People are able to access and participate in markets as workers, consumers, and business owners. E. Market transparency and information symmetry. F. Widespread technology infrastructure for the betterment of all.
	<b>GROWING</b>	G. Increasing good job and work opportunity H. Improving material well-being. I. Economic transformation for the betterment of all.
	<b>SUSTAINABLE</b>	J. Social and economic well-being is increasingly sustained over time. K. Greater investments in environmental health and reduced natural resource usage. L. Decision-making processes incorporate long-term costs.
	<b>STABLE</b>	M. Public and private confidence in the future and ability to predict outcome of economic decisions. N. Members of society are able to invest in their future. O. Economic resilience to shocks and stresses.



Prosperity



Dynamism and opportunity



Inclusion and equality



Health, wellbeing and happiness



Resilience and sustainability



Community, trust and belonging

# Sheffield Health and Wellbeing Joint Strategy 2019-2024



# Existing indices

- Comprehensive, repeatable, mathematically simple, comparable between places.
- Problems of scale/granularity
  - Limited by data availability or index scale (e.g. JRF at LEP)
  - Purpose? Strategy development? Policy evaluation tools? Comms?
- Equally weighted indicator domains
  - Policy options likely to involve trade-offs
  - SIPHER “Wellbeing” index
    - Public preferences WRT “Wellbeing”
    - Link to the 9 HWB Strategy aims



# Conclusion

- Sheffield has made real progress
  - Strategic vision of SCP and HWBB
  - Partnership working e.g. Progressive procurement
  - Vibrant Economy index encouraging
- Questions remain as to the best way to measure further progress
- SIPHER consortium offers an exciting opportunity to develop local indicators project and improve policy decision making in Inclusive Growth space.



Thank you!

[laura.white@sheffield.gov.uk](mailto:laura.white@sheffield.gov.uk)

[christopher.gibbons@sheffield.gov.uk](mailto:christopher.gibbons@sheffield.gov.uk)